

# INSTRUCTION SHEET: TTB Steering Stabilizer Brackets

PART# 8311

## CONTENTS:

- 1 Cross Member Mount
- 1 Drag Link Mount
- 2 3/8" x 1" NC Bolts
- 2 3/8" Nyloc NC Nuts
- 4 3/8" Flat Washers
- 2 5/16" U-Bolts
- 4 5/16" Nuts
- 4 5/16" Lock Washers

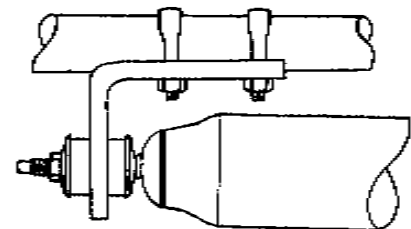
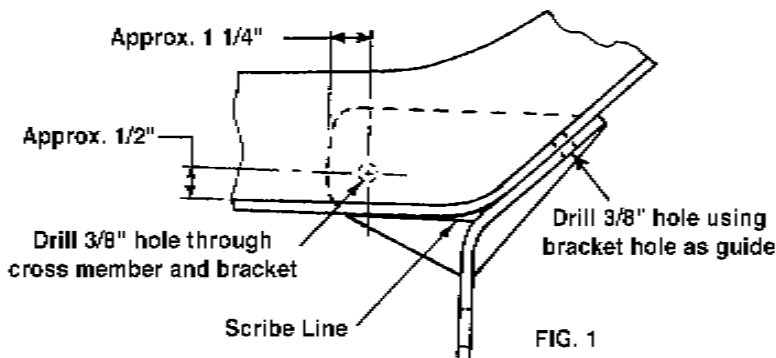


865.938.6696 www.jamesduff.com  
6609 Bronco Ln.  
Knoxville, TN 37921

1/1 12/06

### Please read all instructions before beginning.

1. Place the cross member bracket behind the right side of the front cross member with the scribe line in the bracket horizontal and lined up with the bottom edge of the cross member as shown in Figure 1.
2. Clamp the bracket in place using vise grips or "C" clamps. Using the hole in the bracket as a guide, drill a 3/8" dia. hole through the cross member, and bolt the bracket to the cross member with a 3/8" x 1" bolt, nyloc nut & 2 washers.
3. With a center punch, mark a spot on the face of the cross member in the approximate position shown in Figure 1. If your vehicle has a small hole in the cross member in approximately the same position, use it as a guide. Drill a 3/8" dia hole through both the cross member and the bracket.
4. Install the remaining 3/8" x 1" bolt, nut and two washers in the new hole. Remove the clamps.
5. Install the drag link bracket to the drag link as shown in Figure 2. Leave it loose enough so it can be slid up and down the drag link. Remember, the drag link is the bar that attaches the steering box to the right wheel.
6. Install the stabilizer on the bracket. Do not over tighten the bushings, or they won't work properly. The bushing should be tight, but not to the point that the bushing is deformed.
7. Extend the stabilizer until approx. half the rod length is exposed. (About 4 1/2" on a James Duff stabilizer)
8. Position the drag link bracket to minimize any side load on the stabilizer, and tighten the bracket to the drag link. Install the other side of the stabilizer on the drag link bracket.
9. To check for proper clearance, rotate the wheels from lock to lock. Recheck all bolts after 100 miles of use.



### LIMITED WARRANTY

James Duff Inc. warrants our products to the original purchaser to be free from defects in materials and workmanship. Warranty periods begin at the date of purchase and varies by product. Shocks have a limited lifetime warranty. Headers, Radiators and Suspension Products have a one year warranty. Power Brake Boosters and Master Cylinders have a three year warranty. Adapters and soft goods such as Canvas tops, upholstery, vinyl and rubber products have a 90 day warranty. All warranties are to the original purchaser with proof of purchase only. Such obligations under this warranty shall be limited to the repair or replacement, at JDI's discretion, of any assembly or part which upon examination by JDI proves to be defective. Any costs of removal, installation, reinstallation or freight charges are expressly excluded from this warranty. This warranty covers only manufacturers defects, and does not cover product finish or damage resulting from abuse, misuse, negligence, racing, alteration, accident or damage in transit.

All returns must be pre-authorized by JDEI and accompanied with a Return Goods Authorization Number (RGA) and a dated proof of purchase. Returns must be made within 90 days of purchase, shipped prepaid, packaged in original cartons to prevent damage in shipment and sent to JDI, 6609 Bronco Lane, Knoxville, TN 37921 Returns without an RGA# will be refused.

This warranty is expressly in lieu of all other warranties, expressed or implied, including the implied warranties of merchantability and fitness for use. This warranty gives you specific legal rights including other rights that vary from state to state. Some states do not allow limitations on how long an implied warranty lasts, or do not allow the exclusion of limitation of incidental or consequential damages, so the above limitations and/or exclusions may not apply to you.